

# WELLINGTON TECHNICAL MEETING – JUNE

Wednesday 7 June 2017

## Fast Facts

**Speaker:**

Simon Nathan

**Topic:**

The Blackwater Mine

An illustrated case history of hard-rock gold mining and ore processing in the early 19<sup>th</sup> century

**When:**

Wednesday 7 June

5.30pm light nibbles & drinks

6.00pm presentation

**Where:**

Straterra

Ground Floor,

93 The Terrace

WELLINGTON

**Cost:**

Free for all attendees

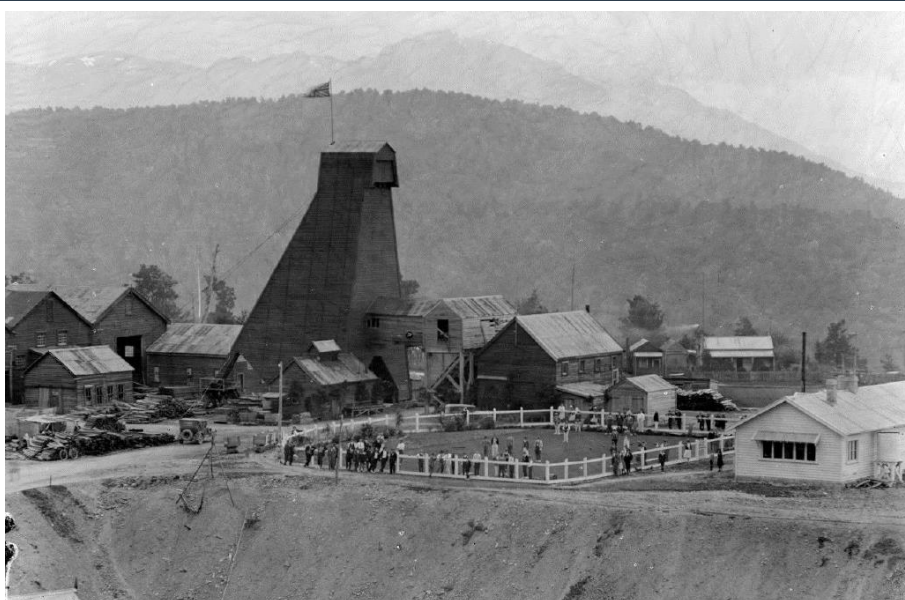
**Registration:**

Please RSVP your interest to  
[event@straterra.co.nz](mailto:event@straterra.co.nz)

This technical meeting is brought to you by  
The AusIMM New Zealand Branch and is worth  
1 PD hour



The AusIMM New Zealand Branch thanks  
**Straterra** for co-hosting this event



The Blackwater Mine at Waiuta, near Reefton, profitably mined a steeply-dipping quartz reef between 1908 and 1951, and until 1938 the ore was processed at the nearby battery in Snowy River. Incorporating the latest technology when built in 1908, it was a typical early 20<sup>th</sup> century processing plant. We are fortunate that local miner and photographer, Joseph Divis took a sequence of photographs of both the mine and processing plant in 1931 which give a clear idea of the mining operation then.

Roasting of the ores concentrates after 1924 had the unanticipated consequence of contaminating part of the area around the battery with arsenic, which persists in the soil today. Work has been underway to remediate the most contaminated sites.

Simon Nathan is an emeritus scientist at GNS Science. He has worked in many parts of New Zealand, but chiefly on the West Coast of the South Island. He continues to work on historical topics, and recently published an illustrated biography of Joseph Divis (with financial assistance from the New Zealand branch of AusIMM).